

# Advanced Duxbury

## High Tech Center Training Unit

of the California Community Colleges at the  
Foothill-De Anza Community College District

21050 McClellan Road  
Cupertino, CA 95014  
(408) 996-4636

[www.htctu.net](http://www.htctu.net)



URL to our CC license:

<http://creativecommons.org/licenses/by-nd-nc/1.0/>

Creative Commons website:

<http://creativecommons.org>

# Table of Contents

|   |    |
|---|----|
| The Braille Cell.....   | 1  |
| Creating E-text .....   | 2  |
| Checklist .....   | 2  |
| Formatting E-text in Word.....                                  | 3  |
| Apply Styles.....   | 4  |
| Checklist for Preparing a Document.....                         | 4  |
| Table of Contents.....  | 5  |
| Insert Page Numbers: One-to-One Relationship Maintained .....   | 7  |
| Insert Page Numbers: One-to-One Relationship Lost .....         | 8  |
| Suggestions on Graphics.....                                    | 9  |
| Suggestions on Sidebars, Footnotes, Etc. ....                   | 9  |
| Importing to Duxbury .....                                      | 10 |
| Standard vs. Textbook Formats .....                             | 10 |
| Understanding Braille Formatting .....                          | 11 |
| The following is taken from the Duxbury online help menu.....   | 11 |
| A Note about Print vs. Braille Formatting.....                  | 11 |
| Preliminary Pages and the Main Body.....                        | 12 |
| A Further List: Miscellaneous Issues.....                       | 15 |
| Fine-tuning in Duxbury.....                                     | 15 |
| Using Codes .....   | 15 |
| Creating Styles .....   | 16 |
| Creating a Transcriber's Note Style .....                       | 16 |
| Creating a New Template .....                                   | 18 |
| Special Techniques .....  | 18 |
| Preliminary Pages .....   | 18 |
| Create a Title Page.....  | 19 |
| Adjusting Page Numbers .....                                    | 19 |
| Tables.....   | 20 |
| Creating a Table.....   | 21 |
| Checklist for Tables .....                                      | 24 |
| Foreign Languages.....  | 24 |
| Insert an International Character by Using a Shortcut Key ..... | 25 |
| Foreign Language Format.....                                    | 26 |
| Computer Braille.....   | 26 |
| Math.....   | 27 |
| Duxbury Shortcut Keys.....                                      | 29 |
| File Menu .....   | 29 |
| Edit Menu.....  | 29 |
| View Menu.....  | 29 |
| Layout Menu.....  | 29 |
| Global Menu .....   | 29 |
| ASCII Braille Table .....                                       | 30 |

# The Braille Cell

Braille is based on configurations of six dots that have been arranged in two columns of three dots each. This pattern of six dots is known as a "Braille cell."



The dots are numbered. Starting at the top of the left-hand column and going down, you have dots 1, 2, 3. At the top of the right-hand column and going down are dots 4, 5, 6.

1 4  
2 5  
3 6

With this numbering system, we can talk about the dots. I can tell you that the letter "a" is represented by dot 1, and you can determine which dot that is. Below are the symbols for the Braille alphabet and numbers. The letter "w" is shown off to the side because it was added to the system after the other letters.

a b c d e f g h i j  
a b c d e f g h i j

k l m n o p q r s t  
k l m n o p q r s t

u v x y z w  
u v x y z w

1 2 3 4 5 6 7 8 9 0  
#a #b #c #d #e #f #g #h #i #j

# Creating E-text

The first step in creating Braille is creating clean, usable e-text. Below is a checklist of the steps for creating e-text from a textbook.

## Checklist

|                |   |  |
|----------------|---|--|
| Book binding   | remove binding and separate pages   |  |
| Scan           | a chapter at a time   |  |
| Stripping      | remove headers/footers; keep page numbers   |  |
| Graphics       | retain captions when feasible<br>use transcriber's notes to give information about graphics |  |
| OCR            | run program and proof (remember foreign language option)                                    |  |
| File Structure | 00 Front Matter; 01 Chapter, 02 Chapter, etc.;<br>Back Matter                               |  |
| Save           | save to MS Word (save as 95 for v. 10.3)  |  |
| Return book    | rebind the book (comb binding works well)   |  |

# Formatting E-text in Word

|   |  |  |
|---|--|--|
| Insert page numbers   | Mark with RefPageNumber style<br>or use "Mark Print Page Breaks"     |  |
| En dashes   | – with - (en dash with hyphen)                                       |  |
| Ellipses  | ... with ... (ellipses symbol with<br>three periods)                 |  |
| Spaces around hyphens   | - space and space - with -   |  |
| Manual page breaks<br>(unless marking print page breaks)  | ^m with ^p (^k finds both breaks)                                    |  |
| Manual section breaks<br>(unless marking print page breaks)   | ^b with ^p (^k finds both breaks)                                    |  |
| Soft returns  | ^l with space  |  |
| If you have tables:<br>Tabs followed by spaces<br>Tabs preceded by spaces<br>Multiple tabs<br>Tabs at the ends of lines | ^t space with ^t<br>space ^t with ^t<br>^t^t with ^t<br>^t^p with ^p |  |
| If you do not have tables:<br>Remove all tabs   | ^t with a space  |  |
| Double spaces   | space space with space   |  |
| Spaces before paragraph mark  | space ^p with ^p   |  |
| Spaces after paragraph mark   | ^p space with ^p   |  |
| Multiple returns  | ^p^p with ^p   |  |
| Strip headers and footers   | text string with nothing   |  |

Please note: Unlike Duxbury 10;4, Duxbury 10;5 needs to have curly quotes (called "smart quotes" in MS Word) turned on. Check the AutoCorrect options!

## Apply Styles

1. Use the Braille template!
2. Use styles!

All the styles in the template will transfer cleanly into Duxbury. If you do not use the template, you may only use the styles listed below.

### **The Following Styles Transfer to Duxbury from any Word document:**

**Normal/default paragraph/body text**

**Heading 1**

**Heading 2**

**Heading 3**

**List/List Bullet/List Number**

**Index (levels 1–9)**

3. Sometimes you can use search and replace to apply styles.
4. Make sure you use the Courier font only for Web and e-mail addresses. Duxbury expects Courier to be computer Braille code (CBC).
5. Run a spell check.

## Checklist for Preparing a Document

|                      |  |  |
|----------------------|--|--|
| AutoFormat           | off  |  |
| Show hidden          | on   |  |
| Search and replace   | page and section breaks<br>multiple tabs, spaces, paragraphs |  |
| Apply styles         | normal, heading 1–3, list, index 1–9                         |  |
| Web/e-mail addresses | Courier  |  |
| Page numbers         | Number on own line; Use style                                |  |
| Save                 | save as Word doc (6.0 for 10;3)                              |  |

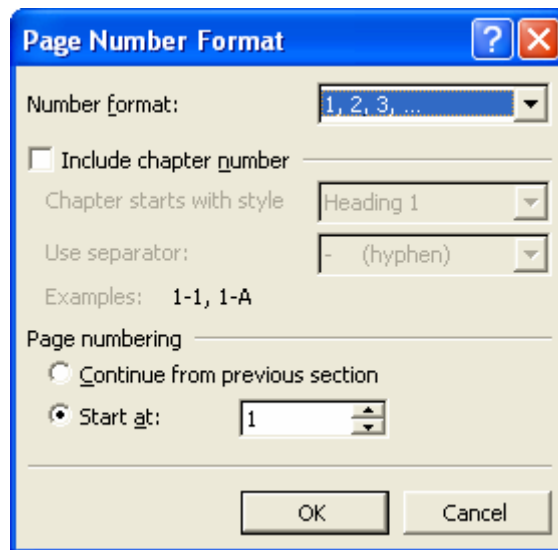
## Table of Contents

---

The simplest procedure is to generate your table of contents in Word. If you have used styles correctly, Word will generate a table of contents based on the three levels of headings that you have used.

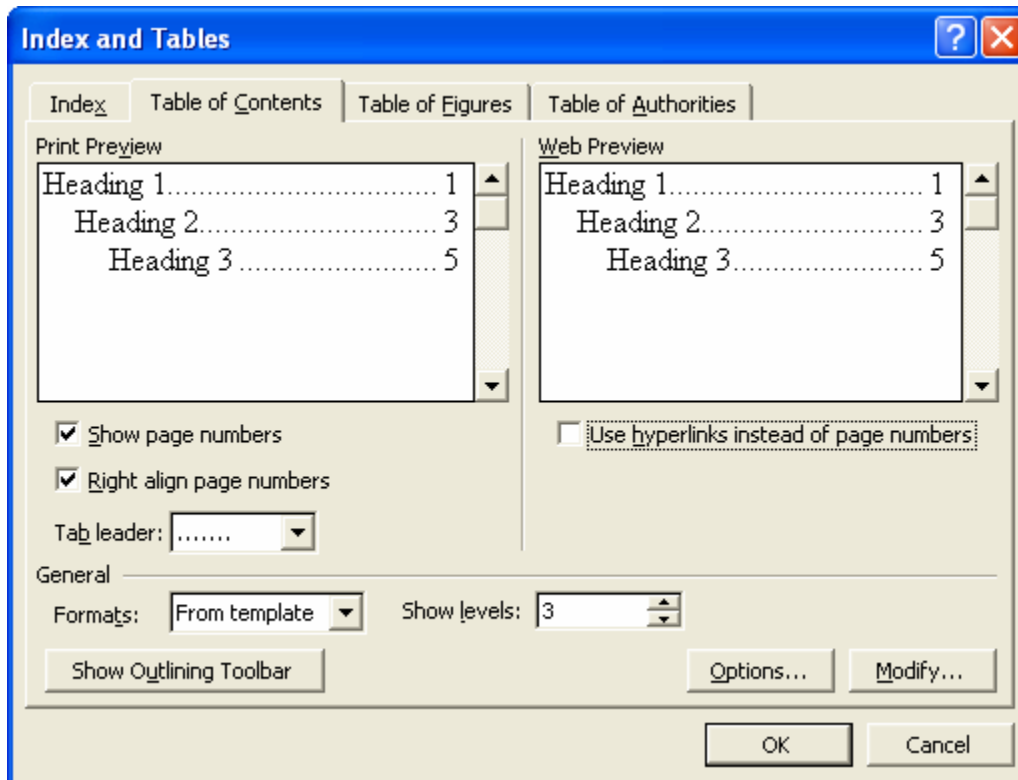
Make sure that the headings are on the same pages as in the print book. You may need to add manual page breaks and adjust the size of the body text in order to obtain the one-to-one correspondence of Word page to print page.

Note that you also may need to change the Word page numbers. Go to View > Header and Footer > Format Page Number if you need to change the Word page numbers to align with the book's page numbers.

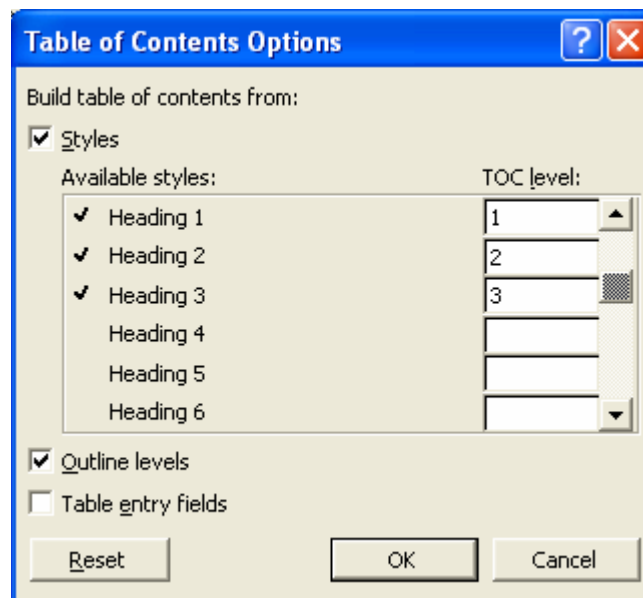


**IMPORTANT:** Before you begin to create the table of contents, make sure that the cursor is positioned where you want the TOC to be inserted.

To create a table of contents, go to Insert > Reference > Index and Tables.



The preview shows you which levels of headings will be included in the table of contents. By default the first three levels of heading (Heading 1, 2, and 3) are included. If you wished to modify which styles will be included, choose the Options button.



Check those styles that you wish to be included in the TOC.

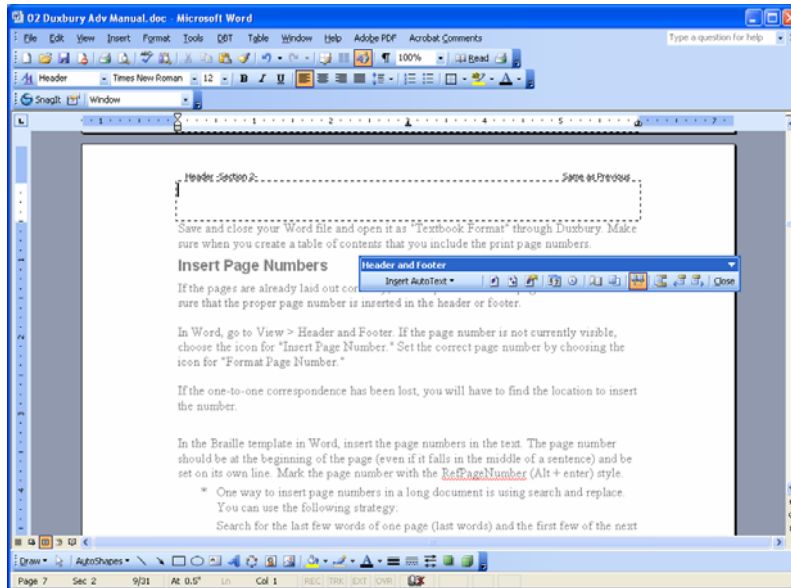
Once you have created your table of contents, you can update it by right clicking anywhere in the table and choosing "update."

Save and close your Word file and open it as "Textbook Format" through Duxbury. Make sure when you create a table of contents that you include the print page numbers.

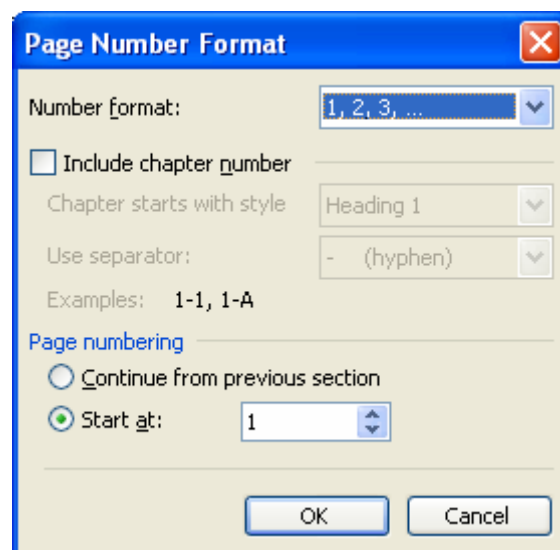
## Insert Page Numbers: One-to-One Relationship Maintained

If the pages are already laid out correctly, it is simple to insert the page numbers. Make sure that the proper page number is inserted in the header or footer.

In Word, go to View > Header and Footer.

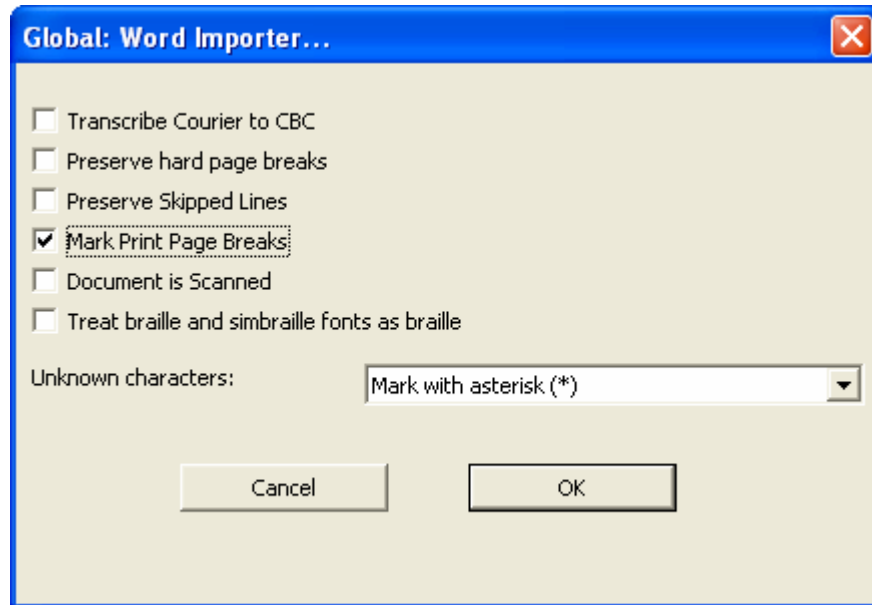


If the page number is not currently visible, choose the icon for "Insert Page Number." Set the correct page number by choosing the icon for "Format Page Number."



Change the "Start at" number to match the folio number from the book of the first page in your document.

Save the document and exit out of Word before opening the document in Duxbury.



Make sure that the Global Word Importer is set to "Mark Print Page Breaks." Open the file in Duxbury, and it will automatically load the print page numbers into the document.

Note that to maintain the one-to-one relationship or print page to Word page, you can insert manual page breaks (Ctrl + Enter in Word) and adjust the font size as needed to ensure that material from a page in the book appears on only one page of the Word document.

## Insert Page Numbers: One-to-One Relationship Lost

If the one-to-one correspondence has been lost, you will have to find the location to insert the number and mark them by hand.

In the Braille template in Word, insert the page numbers in the text. The page number should be at the beginning of the page (even if it falls in the middle of a sentence) and be set on its own line. Mark the page number with the RefPageNumber (Alt + enter) style.

- \* One way to insert page numbers in a long document is using search and replace. You can use the following strategy:

Search for the last few words of one page (last words) and the first few of the next page (next words). (In some cases, you can copy and paste this text into your find and replace window so that you have it exactly correct.)

Replace with the following string:

(last words)^p(page number)^p(next words)

(Note: The parentheses show where to insert your specific information and should not be included. Carat "p" [^p] will give you a return.)

Use care not to inadvertently leave a space after the paragraph mark.

Note: Use shift + home to select a line in the edit box of the search and replace window after typing in the text.

---

---

## **Suggestions on Graphics**

---

---

The recommendation for dealing with graphics is to include them when they convey information or add something to the text. The difficulty arises in that even with the speed of electronic Braille, graphics take considerable time.

Suggestions:

If the graphic is referred to by a figure number in the text, include the caption.

If a graphic does not add anything to the text, i.e., it just looks pretty, omit it.

If a graphic is already explained in the text and does not add information, omit it.

In math/science material include tables, graphs, maps, etc. whenever possible.

Use Transcriber's Notes when an explanation of the graphics is needed.

Remember, a lot of times a written explanation of the graphic works very well for a blind person.

Remember, graphics frequently are included to add visual interest and to break up the text. Neither of these functions is useful in Braille.

---

---

## **Suggestions on Sidebars, Footnotes, Etc.**

---

---

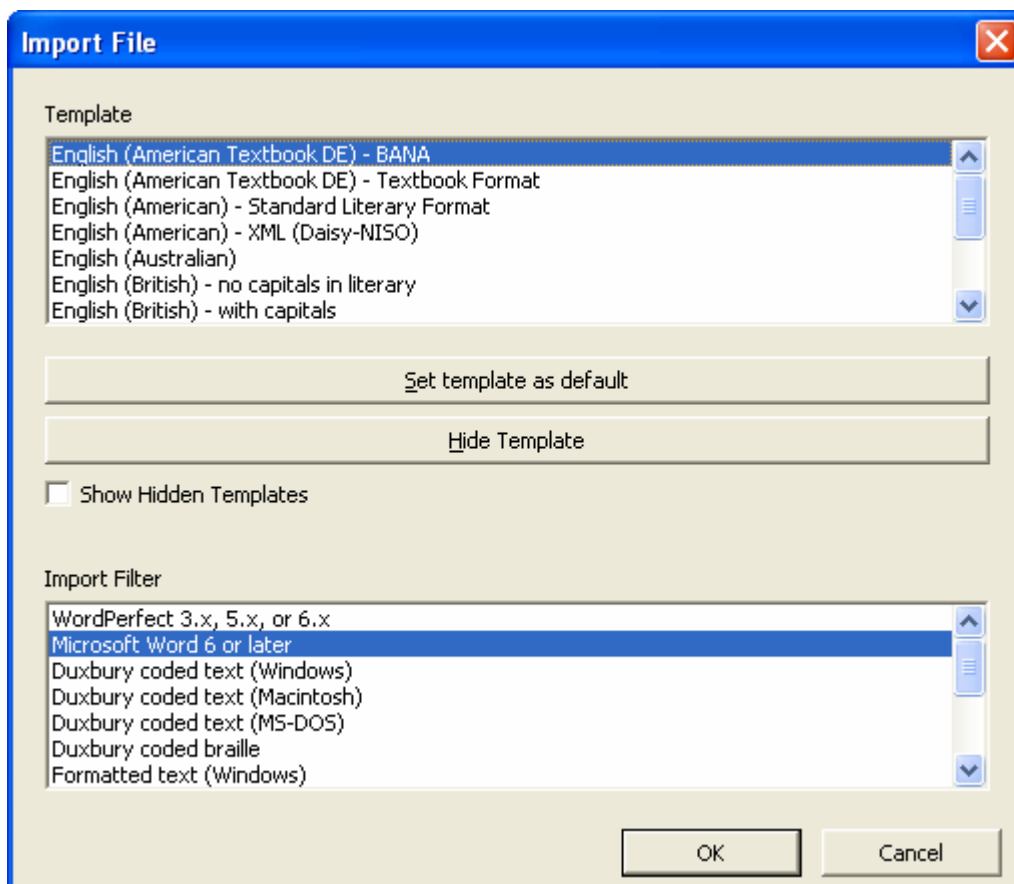
Sidebars, footnotes, boxed text, captions, and such really break up the flow of the text. Professional transcribers follow strict rules about the placement of these ancillary materials, but that option is beyond the scope of most alternate media specialists. Instead, I recommend that you put all such materials in a separate document with its own page numbers to that a student can easily find the materials on a particular page.

When material extends across multiple pages, you can use the inclusive numbers for the page numbers; for example, 6-7, for material that extends across pages six and seven.

# Importing to Duxbury

After saving and closing your Word file, you are ready to open your file in Duxbury.

1. Open Duxbury.
2. Choose File > Open from the menu bar.
3. Choose BANA as the template.



4. Your file will open as a print document in Duxbury.

## Standard vs. Textbook Formats

---

There are a number of minor differences between standard and textbook formats, but the one that is of greatest significance to us is that textbook format uses the print page numbers. Whenever you need to know which page would correspond in print to the Braille, you must use textbook format.

If the print page numbers do not matter, as in books of literature, use standard format.

## Understanding Braille Formatting

Braille does not use proportional spacing as computers do. In other words, every letter or character in Braille takes up exactly the same amount of space as every other character. When you look at a page of Braille, you may notice that it looks like it is lined up in rows and columns. In fact, it is.

```
=====
=====
=====
=====
=====
=====
```

Braille on an 11.5 in. x 11 in. piece of paper consists of 40 Braille cells going across and 25 lines going down.

When transcribers talk about formatting Braille, they refer to indents and runovers. If a paragraph indents to cell 3, it means that the Braille will start in the third cell. If the runovers go to cell 5, it means that the second and succeeding lines will begin in cell 5.

For example, you have the following directions for formatting a list:  
"A list should be in cell 1, with runover lines in cell 3"

This direction says that the first line will start in the first column (cell 1) and succeeding lines will be indented two cells to begin in cell 3.

## The following is taken from the Duxbury online help menu

### **A Note about Print vs. Braille Formatting**

Sometimes DBT formats print documents differently than braille documents. Although this makes sense, it can be easy to forget that the print and braille aren't always formatted identically. So, if your paragraph isn't formatted exactly the way you'd like, translate to braille to see what is actually happening in the braille.

Additionally, when you translate from print to braille, you create a *completely new document*. Therefore, once you translate to braille and if you want to make further changes, *be sure to close the braille document rather than translating back to print!* The quick way to close a document is to press CTRL+F4 (ALT+F4 will close the program, exiting you from DBT).

## Preliminary Pages and the Main Body

The following are guidelines for specific transcriber issues, according to BANA standards; please be sure to refer to the BANA Formats book for a full explanation of how special symbols and formats should be used. These guidelines include how to handle the issues in DBT, and do not include all of the exceptions and special circumstances listed in the Formats book. Explanations of rules are provided courtesy of Susan Christensen, Certified Transcriber. If you are looking for a specific transcriber element and are having difficulty locating it, try checking the Index at the back of this guide.

- **Creating a running head**—In order to create a running head, select “**Layout: Header...**” from the menu. You can tell DBT Whether the header should go on all pages, even or odd pages. By selecting “None”, you can tell DBT to turn off an existing header. Note that there should be no running head on the title page or the first print page after the preliminary pages. In order to do this, you must place the header after the first word of the page *before* the page the header should start on.
- **Forcing a new braille page**—Press CTRL+ENTER.
- **Creating a new print page**—Press ALT+ENTER; then type the print page number and a space. Continuation print pages will have an alphabetical prefix in the braille (e.g., 1, A1, B1, etc.)
- **Title Page**—Depending on the agency, either centered or at the left margin. The title page should also be centered vertically on the page. This must be done manually. Be sure to check the braille, not the print, for centering. The “tp.general” style centers text horizontally.
- **Dedication Pages**—Centered vertically on the braille page. You must center vertically on the page manually, by using the ENTER key. Be sure to check the braille results, not the print.
- **Preliminary Page Numbering**—Textbooks have p1 (“p” stands for “preliminary”) starting in the lower right corner on the first page (title page) of the prelims. There are no ink print page numbers (upper right corner) of any preliminary page (including the table of contents). Use the code [pv1~p] to start preliminary page numbering. Place this code at the very beginning of the document. Also, be sure that under “Document: Page Numbering” (from the menu), “First Page Number to Display” is set to “1.”
- **Main Body**—Full title goes on the first page of the text, and a running head on all following pages. Running heads are an agency decision, but it should not be longer than one line. See “Creating a Running Head” for instructions on creating the header properly.
- **Main Body Page Numbering**—Textbook page number in upper right corner, with running braille page in lower-left corner (no “p”). Set page-numbering placement by using the document menu (or the “textbook” format, which defaults to these settings). You can turn off the prefix by using the code [pvX~] (replacing “X” with the page number).
- **Main Body Normal Paragraph Formatting**—Indents to cell three with runover in cell 1. Use the “para.” style.
- **Headings**—The style “h1” is for use as a major heading, style “h2” is for use as a minor heading. Major headings are centered, and minor headings are indented at cell 5.

- **Blank lines**—usually, styles will handle blank lines automatically. However, should you need to force a skipped line, simply use the code [ sk1 ].
- **Directions**—Directions are indented to cell 5, with runover lines at cell 5. I recommend creating a style with the starting code [ ind5 ] and the ending code.
- **List**—A list should be in cell 1, with runover lines in cell 3. Use the “list” style.
- **Exercise Material**—First line at cell 1, with runover at three. If the material contains Sub-entries, then the sequence is 1-5, 3-7, 5-9, etc. Start the first line(s) with the “list.” style, and all following sub-entries in the “outline.” style. Remember to use the levels, so the first sub-entry level will be level 1, and you may use ALT+RIGHT ARROW to move in a level (e.g., from level 3 to level 4), ALT+LEFT ARROW to move out a level (e.g., from level 4 to level 3).
- **Beginning and ending boxing lines**—These are handled using one style: “box”. Place all text between the start and end of the style, and you will have a boxed paragraph. If the text is already in the document, simply highlight the portion you want boxed, and apply the “box” style.
- **Tables**—In order to set tabs for the creation of tables, use the following codes: [ ctb ] to clear tabs. [ stbS:A:P ] where S is the stop number, A is the alignment (l for left; r for right; d for decimal), P is the focal position (cell #). If you want to fill a tab, use the [ #S:F~X ] code, where S is the stop number, F is the fill type (f for Full, p for Partial), and X is the character (usually double-quotes). Because tables can be so tricky, please call Duxbury Systems technical support if you need further information.
- **Columnar Material**—Set tabs as with tables; because columnar material can be so tricky, please call Duxbury Systems technical support if you need further information.
- **Poetry**—each level indents 2 and the runover is dependent on the furthest indent—in other words, if I have 4 levels of indent, they would be at 1, 3, 5, 7 and all runovers would be in 9. Use the “poem.” style for a single-level poem; use the “poem.2level.” style for a two-level poem. For a poem with more than two levels, simply add a style based on “poem.2level.”, and change the runover setting of the “hi” code according to the number of levels.
- **Line numbered prose**—each new line of text has a corresponding number in the right margin. The line number does not have a number sign. It must have at least two clear cells before that numbered “margin” which is determined by the longest number on that page. Text cannot be on lines 1 or 25 of the braille page (because of the page numbers). Create the following style; I named mine “LineNumber” but you may name it anything that will make sense to you:  
Beginning Codes: [ lps ] [ fr ] [ ons ]  
Ending Codes: [ lpr ] [ one ]
- At the beginning of the print line, use the above style, with the appropriate line number within the style; include spaces *after* the style where appropriate (where it appears in the print).
- Where the print line runs over, use the [ pm ] code to produce three blank cells at that point in the braille; place the “LineNumber” style after one word on the new print line.

- **Line numbered poetry**—much the same as line numbered prose, but these are numbered every fifth line. As with line numbered prose, you may use the “LineNumber” style and [pm] code as described above.
- **Footnotes**—7-5 most of the time—other instances are dependent on the format the text is in, such as poetry, and then a footnote starts two cells to the right of the runover cell. For standard footnote formatting, use the “note.” style. For special formatting, modify the “note.” style, but change the number for the [tab] code to two cells to the right of the runover cell. Consider creating a “Poem” template for some situations (i.e., if you know you will need the “note.” style to be applied for a poem).
- **Transcriber’s Notes**—The first line should be set at cell 7, with runover lines at cell 5. The transcriber’s note symbol (dot 6, dot 3) is accessed by using the menu: select “Layout: Character Codes: Termination Sign” or by entering the ASCII symbols manually; the correct format is applied by using the “note.” style. As this is a rather cumbersome method of putting in a transcriber’s note, I recommend creating a style of your own naming (e.g., “tn.”), based on the “note.” style but with the transcriber’s note symbols added. The resulting style should look like this:

**Starting codes:** [1][ind5][tab7][q~, ’]

**Ending codes:** [q~, ’][ind1]

- **Diacritics (pronunciation)**—The ASCII representation of the braille must be entered directly into the print. Use the “brlinline” style to keep DBT from trying to translate it. For a list of diacritic marks and the braille equivalents, see Appendix E.
- **Glossaries**—Glossaries are set at cell 1 with runover lines at cell 3, with sub-entries at 1-5 and 3-5—only two levels; use the “list.” style for the first level, and the “outline.” style for the other two levels.
- **Guidewords** (the first and last word of the braille page) are listed on the 25<sup>th</sup> line, separated by a dash. Create a style (such as “GuideWord”) using the code [meg] as the starting code (no ending code). Use the guide word style for each glossary entry, and DBT will place the guide words appropriately. As an example, if you had the word “mark” at the top of a braille page, and the word “zebra” at the end of a braille page, you would type the word “mark” followed by the “GuideWord” style, and the word “mark” again. Do the same thing for all of the words in the glossary, from beginning to end. In this example, the words “mark” and “zebra” will appear at the bottom of the braille page (on line 25) with a dash between them.
- **Emphasis: Italics**—Use the following paired codes; the starting code should be placed before the first italicized word, while the ending code should be placed after the last italicized word:  
**Starting Code:** [fts~i]  
**Ending Code:** [fte~i]
- **Emphasis: Bold**—For a single indicator, create a style (such as “bold.single”) containing the starting code [q~\_ . ] and no ending code. For a double indicator, create a style (such as “bold.double”) containing the starting code [q~\_ . . ] and no ending code.

## A Further List: Miscellaneous Issues

- **Letter signs: how to force & suppress**—Force a letter sign by creating a style using the starting code [  $\alpha$ ~ ; ] and no ending code. Suppress a letter sign by creating a style using the starting code [ / ] and no ending code.
- **Apostrophe and single quote**—The single-quote may be found under the tilde (~) character in the upper-left of the standard American keyboard. The apostrophe is located directly under the double-quote on the standard American keyboard.
- **How to force a new braille page**—Press CTRL+ENTER. This will produce the [ pg ] code. If you want to force a new reference (print) page, press ALT+ENTER.
- **Switching to grade 0 and 1**—Place the cursor at the point where you want DBT to start translating in the new grade, then press the ALT key plus the number of the grade. For instance, if you want to switch to grade 1, press ALT+1.
- **Foreign Languages**—If you are transcribing something with foreign words in it, simply apply the style for the language you are transcribing. For instance, if you come across the words “C’est la vie!” apply the “french” style to those words (you will need to highlight those words and then apply the style, or apply the style and then type the words between the beginning and end of the style). If there are special characters (such as a letter with an accent grave), you will find a list of accented letters under the help menu, called “Character List.” Also, you may access a list of special characters and codes under “Layout: Codes List” or pressing the F5 key.

If you are interested in more information on formatting, please see the online reference made available by BANA at [www.brailleauthority.org](http://www.brailleauthority.org). Choose the link for "Link to Braille Formats: Principles of Print to Braille Transcription, 1997" online.

## Fine-tuning in Duxbury

To have real control over the way the Braille appears in Duxbury, you can use the codes. Lists of the codes and what they do can be found in the Duxbury Help menu.

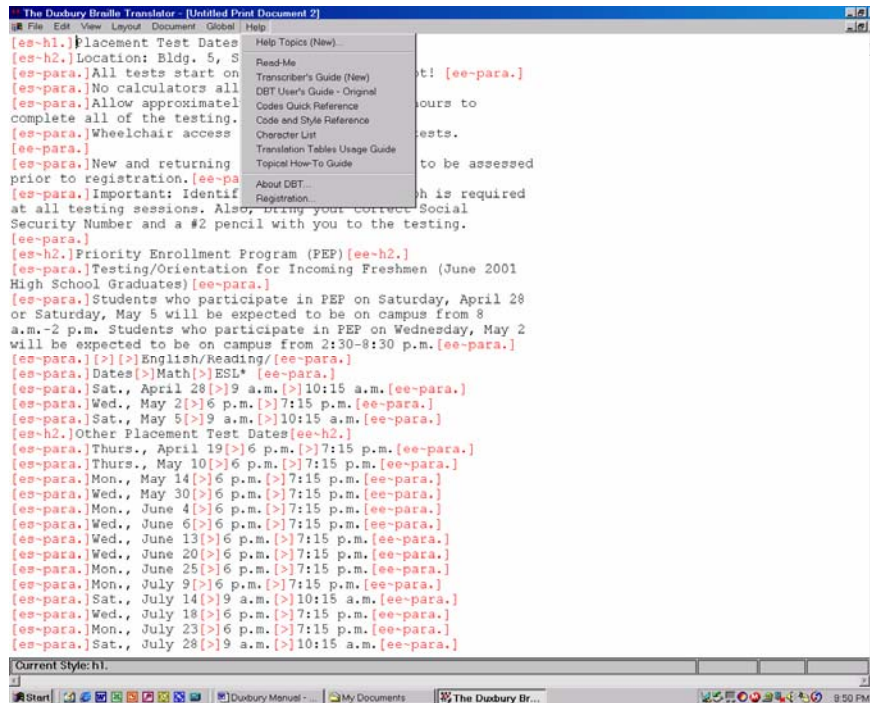
We will just look at a couple of examples.

---

### Using Codes

---

To use codes, you must be in the Duxbury codes view (ALT-F3). Note that if you access the codes view while in the Braille document, you will see the ASCII characters for the Braille. Unless you have a very good sense of ASCII Braille, you will probably want to access the code view from the print document.



In the Duxbury codes, “es~” shows you where a code starts, and “ee~” shows where the code ends. (If you know HTML, the way the codes work is somewhat similar.) The > symbol is a tab. Note that the codes are always found between red square brackets []].

To find out what a particular code means, access the Codes Quick Reference in the Duxbury Help menu.

## Creating Styles

---

Like Word, Duxbury uses styles (which is why we went to all the trouble of formatting in styles in Word). Sometimes Duxbury does not have a style that does exactly what you want. One example is that Duxbury lacks a style for Transcriber's Notes.

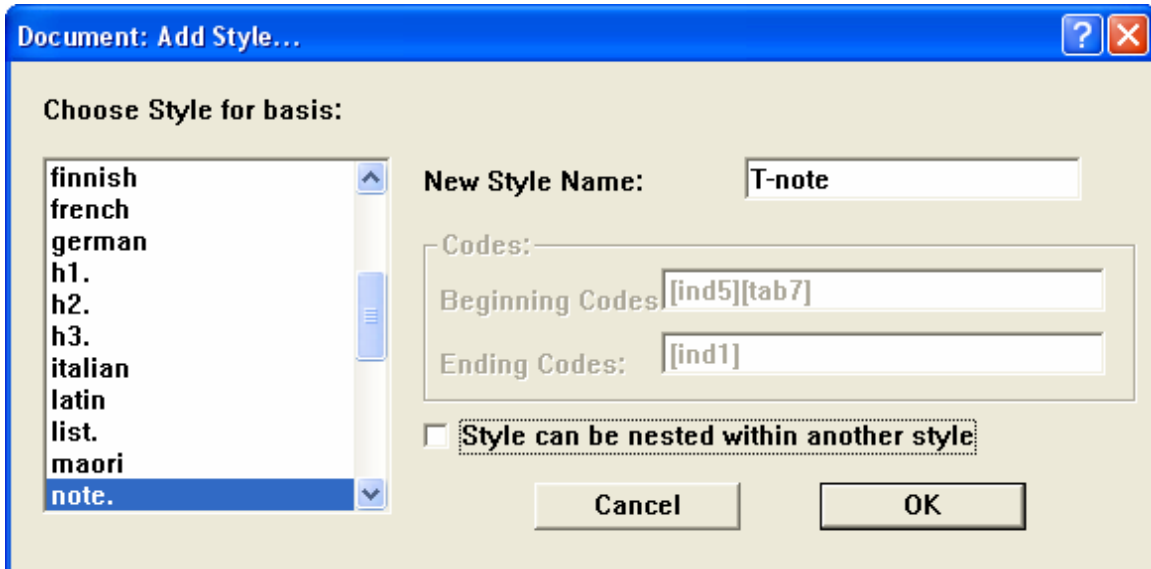
Transcriber’s Notes are used in Braille whenever the transcriber needs to speak to the person reading. The particular format of the style lets the reader know that this text was not in the original print copy and that it will explain something that the reader needs to know.

Duxbury does have a note style, and we can use that style as the basis of the transcriber’s note.

### Creating a Transcriber's Note Style

To create a transcriber’s note style, you must add Braille dots 6, 3 to the beginning and end of the Duxbury “note” style. Those dots are the indicators that the reader is looking at a note from the transcriber and not something that is part of the actual text.

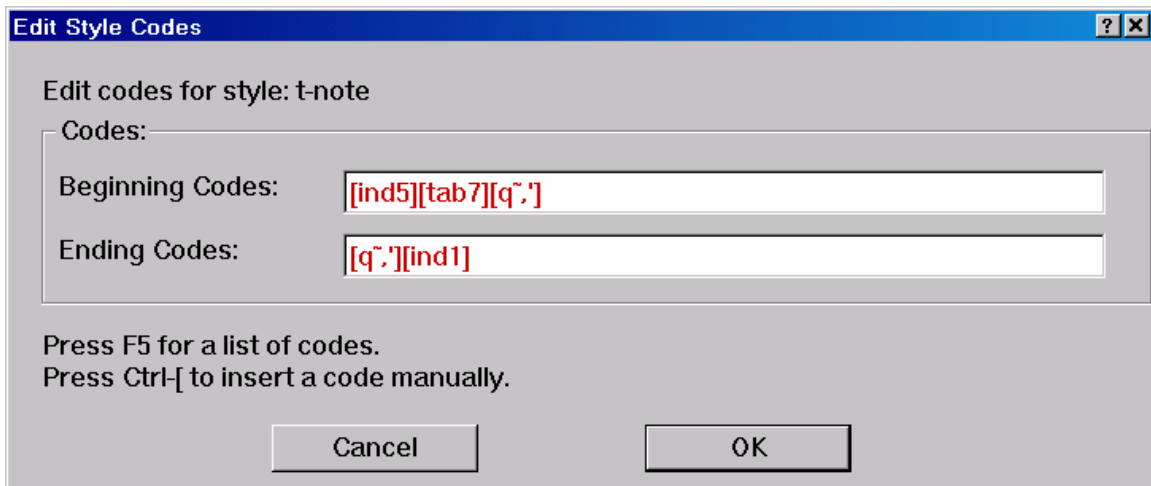
In Duxbury, choose Document > Add Style from the menu. Select “note” as the style on which to base your new style. Name your new style t-note, deselect the "style can be nested" option, and say OK.



When the Edit Style Codes window comes up, click your cursor at the end of the first line and enter the following key sequence:

CTRL-[ q~,'  
 (control plus left bracket followed by the letter q, the tilde, a comma, and an apostrophe)

Click your cursor at the beginning of the second line and enter the same sequence.



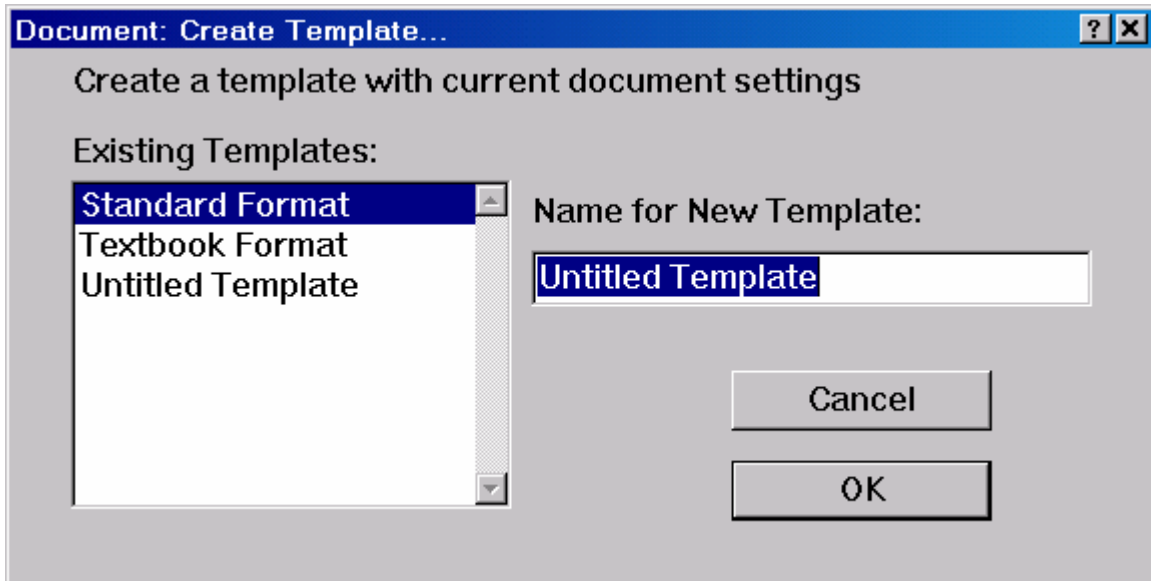
The CTRL-[ command brings up the code brackets, allowing you to manually enter a code command to Duxbury. The q~ (q tilde) command tells Duxbury to enter exactly whatever characters come next within the code brackets. The comma is the ASCII character for Braille dot 6, and the apostrophe is the ASCII character for Braille dot 3.

---

## Creating a New Template

---

To save this code so that you will be able to use it in another document, you need to create a new template. Choose Document > Create Template from the menu bar (or ALT-D followed by C).



Click on the existing template to which you wish to add this style. Note: Templates show up in alphabetic order so if you name the new template “BANA Textbook,” it will be the first one on the list when you create a new file or open a non Duxbury document. When you select your new template, it will contain your new t-note style.

## Special Techniques

Duxbury allows you to Braille tables, foreign languages, computer language, and math. With the exception of the math, the other features are built into Duxbury and do not require any additional software.

---

## Preliminary Pages

---

The following pages are placed first in a Braille volume:

- Title page
- Special symbols page (if needed)
- Transcriber's notes page (if needed)
- Table of contents

The following is taken from the Duxbury manual:

- **Preliminary Page Numbering**—Textbooks have p1 (“p” stands for “preliminary”) starting in the lower right corner on the first page (title page) of the prelims. There are no ink print page numbers (upper right corner) of any preliminary page (including the table of contents). Use the code [pv1~p] to start preliminary page numbering. Place this code at the very beginning of the document. Also, be sure that under “Document: Page Numbering” (from the menu), “First Page Number to Display” is set to “1.”

To return to the numbering for the main body of the textbook, you must turn off the code:

- **Main Body Page Numbering**—Textbook page number in upper right corner, with running braille page in lower-left corner (no “p”). Set page-numbering placement by using the document menu (or the “textbook” format, which defaults to these settings). You can turn off the prefix by using the code [pvX~] (replacing “X” with the page number).

---

## Create a Title Page

---

Create your title page in Word, end it by inserting a page break--or print it as a separate document.

Include the title and author of the book, as well as the copyright information, and the disclaimer that is required under Chafee.

"Material in a format for use by print disabled student only. Further reproduction or distribution of this material is an infringement of copyright law. Copyright 0000, Publisher's Name."

---

## Adjusting Page Numbers

---

Sometimes you need to adjust page numbers or to show that one Braille page covers a number of print pages. Sometimes you also might need to include a specific word such as "section" or "page" before a number.

The following codes can be used in Duxbury to adjust page numbers:

[pg~X] -- Begin new page, and set the page number prefix character to X. E.g. [pg~p]

[pgN] -- Begin new page, and set the page number to N, e.g. [pg123]

[pgN~X] -- Begin new page, and set the page number to N and the page number prefix to character X. E.g. [pg1~p] would start a new page, numbering that page "p1". See also [pv...].

# Tables

Tables in Braille can be quite tricky, but there are a couple of hints that will help. You can place tables on facing pages in a book. If the label for column is rather long, you can assign the column a number, and insert a little key before the table telling what label corresponds to which number.

You might, for example, have something like the following:

- 1 Population Growth after World War I
- 2 Population Growth after World War II

If the table is really a list of facts that do not really need a row and column cross reference, you can use your index styles to create an indented format.

The following table, for example, does not have any cross reference of rows and columns and could be set up in an indented style.

| <b>Law</b>         | <b>Application</b>                      | <b>Mandates</b>  |
|--------------------|---|--|
| <b>Section 504</b> | Anyone receiving federal funds          | Opportunity for disabled students to participate must be as effective as that provided to others |
| <b>Title II</b>    | Public entities                         | Equal information access, including print and computer-based information                         |
| <b>Section 508</b> | Federal entities                        | Provide disabled people access to electronic and information technology                          |
| <b>Title 5</b>     | Anyone receiving California state funds | Distance education courses must be accessible  |
| <b>AB 422</b>      | Postsecondary-textbook publishers       | Must provide disabled students with e-text of required textbooks                                 |

When you set up this table in Word, you can make the first column index 1 style, the second column index 2 style, and the third column index 3 style as shown below.

Section 504

Anyone receiving federal funds

Opportunity for disabled students to participate must be as effective as that provided to others

Title II

Public entities

Equal information access, including print and computer-based information

Section 508

Federal entities

Provide disabled people access to electronic and information technology  
Title 5

Anyone receiving California state funds  
Distance education courses must be accessible

AB 422

Postsecondary-textbook publishers  
Must provide disabled students with e-text of required textbooks

## Creating a Table

If you do need to create a table, you will have to have each row on its own line, with a single tab between each of the columns. You will need to set the tab stops in code view, and in Braille, you want two spaces between each column.

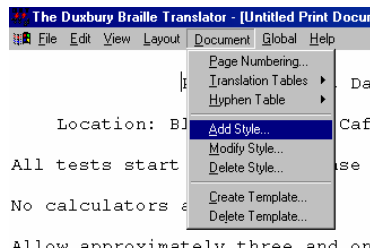
At the beginning of the first line of the table, you need to clear the preset tab stops. To do so you use the code [ctb]—you can think of this code as standing for Cancel TaB. Then, still on the first line, you need to give the code to reset the tabs to your specifications.

Remember that the Braille line is 40 characters. Try to figure out about how many spaces the widest entry in a column will take up, allow two spaces between columns, and figure out where each column needs to start.

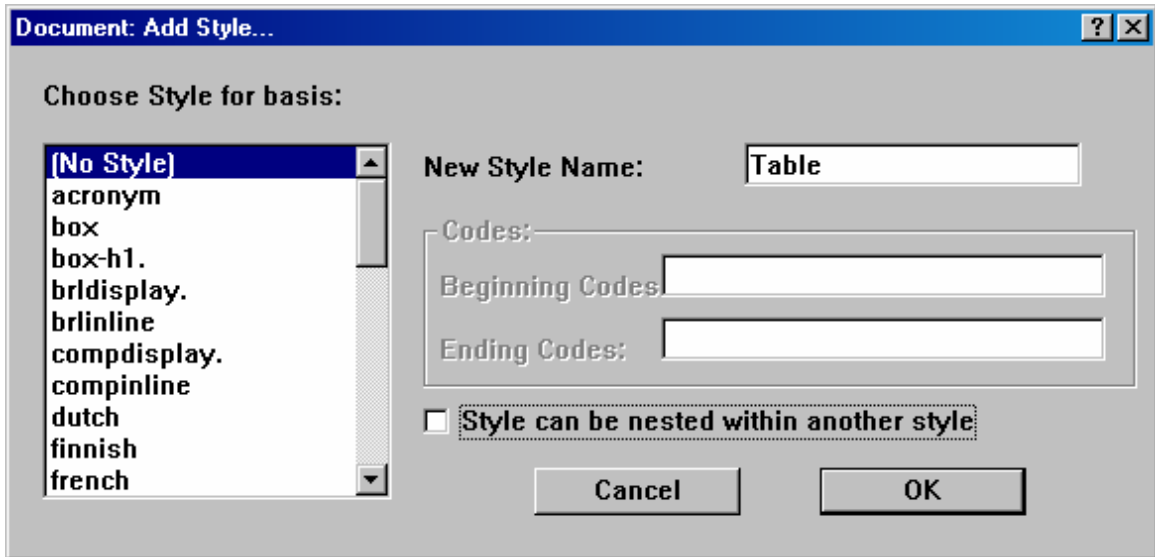
The code for setting the tabs is [stbS:A:P], where S = the stop number, A = alignment (l for left, r for right, d for decimal), and P = position (the cell number). You can think of the stb code as Set TaB.

As an example, I will use the settings for a table I recently formatted. First, to allow enough space for the table, I had to set the margin so that the text began in cell 1. So I created a new style called Table.

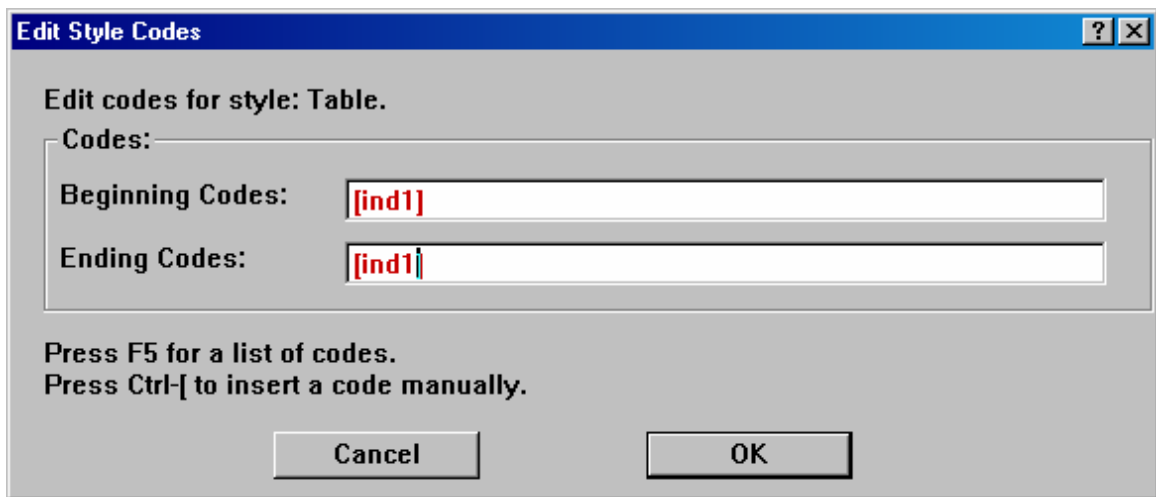
1. Select Document > Add Style.



2. Name the style "Table" and do not nest it.



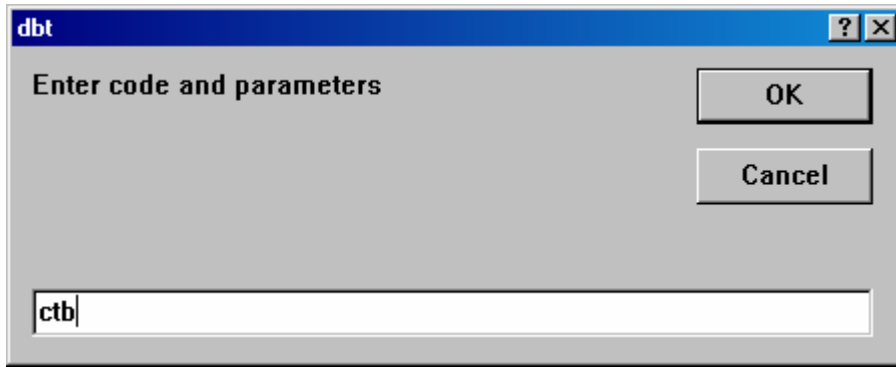
3. Use CTRL-[ to access the code brackets, and set your indent to the first cell (ind1).



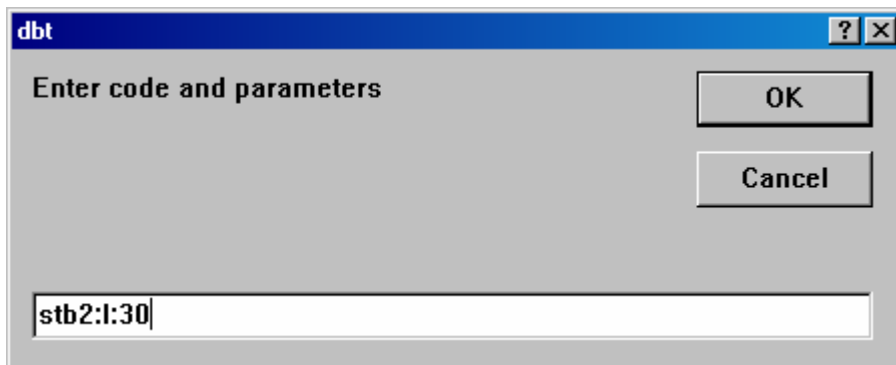
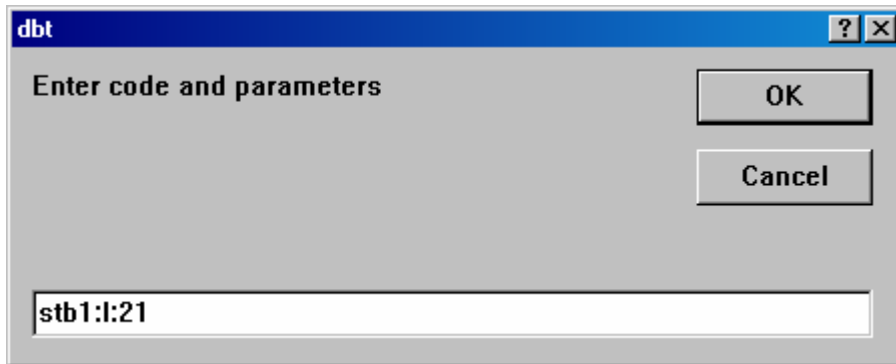
Once I had created my Table style, I could select all the text that would be part of the table and apply that style: Layout > Apply Style > Table (or use the keyboard command, F8, to open the style window).

Next, I had to tell Duxbury in which cell to begin each column of the table.

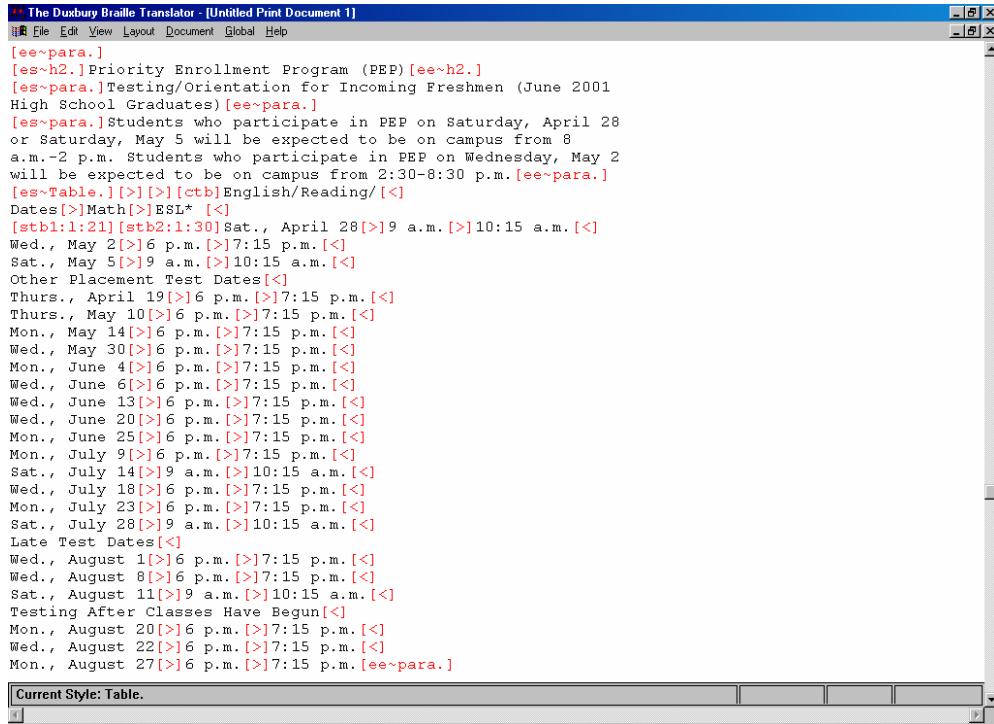
1. At the beginning of the first line of the table, hit CTRL-[ and then enter ctb to clear the tabs.



2. Once I had cleared the current tab stops, I could enter new tab stops. I pressed CTRL-[ and entered the code for my first tab stop [stb1:l:21]—set tab stop 1 for left alignment at cell 21. I pressed CTRL-[ again and entered the code for my second tab stop [stb2:l:30]—set tab stop 2 for left alignment at cell 30.



Following is a shot of how the codes looked for this table in code view. Note the [es~Table] that shows where the indent in cell 1 begins. The [>] symbols indicate the presence of tabs.



## Checklist for Tables

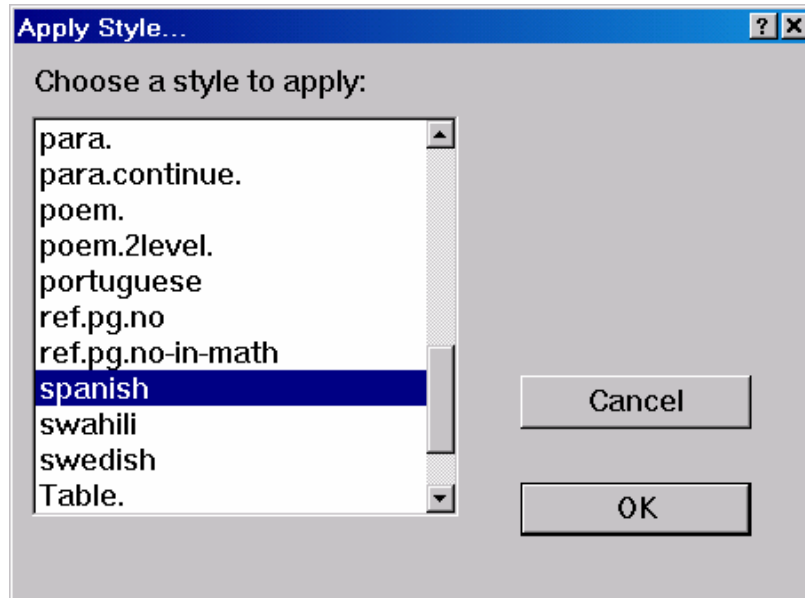
|                              |   |  |
|------------------------------|---|--|
| No cross reference           | use an indented style   |  |
| Long labels                  | assign numbers to the columns, and insert a key before the table              |  |
| Wide tables                  | run the table across facing pages   |  |
| Setting the margin to cell 1 | CTRL-[ with ind1  |  |
| Setting tab stops            | CTRL-[ with ctb for clearing tab settings<br>CTRL-[ with stbS:A:P for setting |  |

## Foreign Languages

Duxbury distinguishes between a book written entirely in a foreign language for native Braille readers of that language and a foreign-language book written in English, for example, a textbook teaching a foreign language to a native English speaker. Spanish Braille for Spanish speakers is different from Spanish Braille for English speakers.

If you are Brailleing a book entirely in a foreign language for a native of another country, you would choose the appropriate language under Document > Translation Tables.

The more likely case, Brailleing a foreign language textbook, is handled by choosing the text that is involved then going to the menu under Layout > Apply Style (or F8) and choosing the appropriate language.



## Insert an International Character by Using a Shortcut Key

The table below is taken from the MS Word Help menu and shows which key strokes to use to create diacritical marks.

| To insert                            | Press                                    |
|--------------------------------------|--|
| à, è, ì, ò, ù<br>À, È, Ì, Ò, Ù       | CTRL+` (ACCENT GRAVE), <i>the letter</i> |
| á, é, í, ó, ú, ý<br>Á, É, Í, Ó, Ú, Ý | CTRL+' (APOSTROPHE), <i>the letter</i>   |
| â, ê, î, ô, û<br>Â, Ê, Î, Ô, Û       | CTRL+SHIFT+^ (CARET), <i>the letter</i>  |
| ã, ñ, õ<br>Ã, Ñ, Õ                   | CTRL+SHIFT+~ (TILDE), <i>the letter</i>  |
| ä, ë, ì, ö, ü, ÿ<br>Ä, Ë, Ì, Ö, Ü, ÿ | CTRL+SHIFT+: (COLON), <i>the letter</i>  |
| å, Å                                 | CTRL+SHIFT+@, a or A                     |
| æ, Æ                                 | CTRL+SHIFT+&, a or A                     |
| œ, Œ                                 | CTRL+SHIFT+&, o or O                     |
| ç, Ç                                 | CTRL+, (COMMA), c or C                   |

| To insert | Press                       |
|-----------|-----------------------------|
| ð, Ð      | CTRL+' (APOSTROPHE), d or D |
| ø, Ø      | CTRL+/, o or O              |
| ı         | ALT+CTRL+SHIFT+?            |
| ı         | ALT+CTRL+SHIFT+!            |
| ß         | CTRL+SHIFT+&, s             |

Duxbury also suggests that you can load the Portuguese keyboard through Windows. (See pages 41–42 of the Transcriber’s Manual.) When this keyboard is loaded into the operating system, the letters remain the same, but you can type the symbol you want followed by the letter to easily enter the accented letter.

## Foreign Language Format

When you create Braille in a foreign language, the foreign language sections use uncontracted (grade one) Braille along with the symbols (normally contractions in America Braille) that the particular language uses for the extra letters found in the alphabet for that language. Here, for example, are the Spanish vowels:

| Spanish letter | Keyboard shortcut             | Braille symbol |
|----------------|-------------------------------|----------------|
| ç              | CTRL + comma + c (or shift C) | &              |
| à              | CTRL + ` (tilde) + a          | (              |
| é              | CTRL + ' (apostrophe) + e     | =              |
| í              | CTRL + ' (apostrophe) + i     | /              |
| ó              | CTRL + ' (apostrophe) + o     | +              |
| ú              | CTRL + ' (apostrophe) + u     | )              |
| ü              | CTRL + : + u                  | \              |
| ll             |                               | 11             |
| ı              | ALT + CTRL + SHIFT + ?        | 5              |
| ı              | ALT + CTRL + SHIFT + !        | 6              |

---

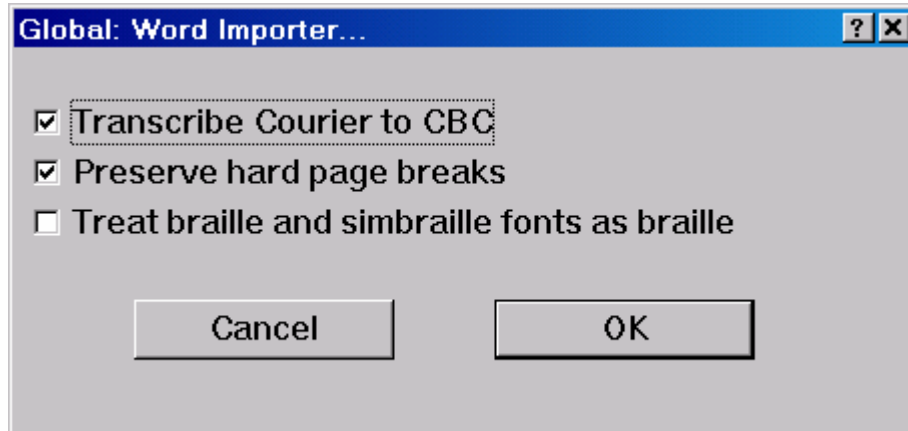


---

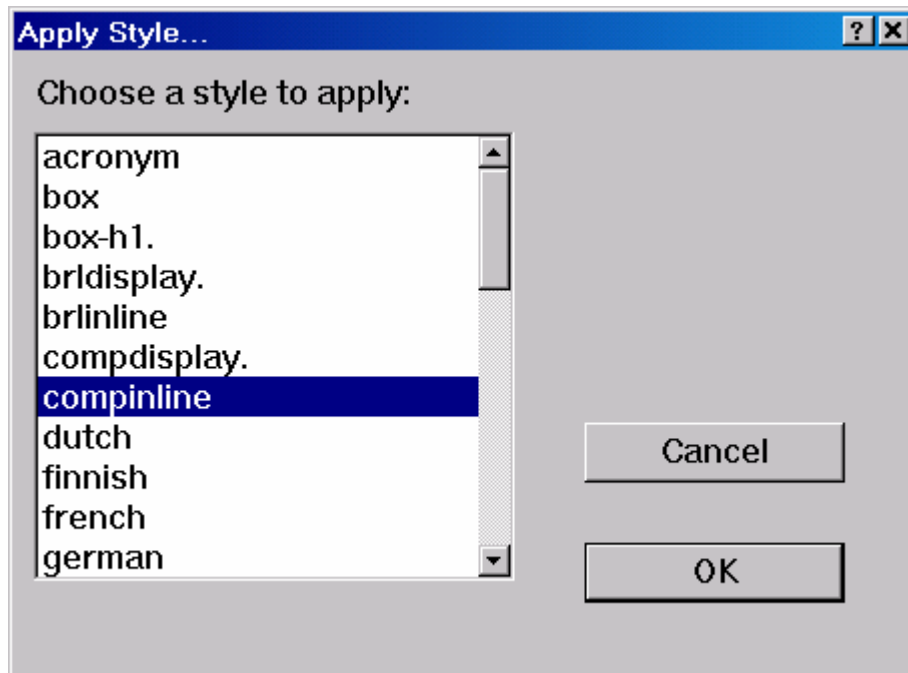
## Computer Braille

To apply the proper style to e-mail addresses or URLs, select the text, use F8 or go up to Layout > Apply Style, and choose “compinline.” The backtranslation will look very strange, so be forewarned--computer Braille looks different. If you have multiple lines of computer Braille, use "compdisplay"

You can set preferences so that when Courier is the font for the text, Duxbury will see that text as computer Braille (CBC). Please note, however, that if you are using the Braille template in Word, you should uncheck this feature. The Braille Word styles will produce the CBC code.



You can also apply the styles in Duxbury in the print code view. Use the compinline (for computer code that is part of a line) or compdisplay (for multiple lines of code) styles.



---

## Math

In order to use Duxbury to produce Braille math (Nemeth), you will need to have Scientific Notebook, which is a program that many math departments already use to

allow them to format math equations for tests. The software is available from MacKichan Software (<http://www.mackichan.com/snbk/default.htm>).

As noted before, many Braille readers do not read Nemeth, so check before you put a math textbook into Braille.

1. Scan your text and run the OCR program.
2. The OCR process is probably going to strip out most of the mathematical notation—that's okay, you're going to retype the equations in later.
3. Edit your OCR document, but ignore the math for now.
4. Do not bother with applying styles in Word, as you would when preparing other documents for Duxbury (Scientific Notebook will not recognize them).
5. Copy the chapter that you have in Word, open Scientific Notebook, and paste the chapter into a new document.
6. Use the math insert function and the equation builder capabilities to enter your math equations into the text wherever necessary.
7. Also insert the inkprint-book page number on its own line (hard return before and after) preceded by three ampersands (e.g., &&&1, &&&2,...) right before the first word on a page.
8. Save the document as a Scientific Notebook document in the DBTdocs folder on the C: drive.
9. Open Duxbury and choose New from the File menu.
10. Browse to the DBTdocs folder, find your Scientific Notebook file, and open it. (Duxbury brings the file in as TeX or LaTeX.)
11. In Duxbury, you will need to apply styles to the headings, lists, etc. (To apply a style, press F8 then choose the style from the list and select OK.)
12. Now the reason for the ampersands...Select coded view by going to View > Codes (or pressing ALT+F3). Select the replace window, Edit > Replace on the menu bar (or press F6). In the "Text to find:" box, enter &&&. In the "Replace with:" box, enter CTRL+[. After the little red brackets appear, type in the letters "lea." Choose OK and replace all. The [lea] code will tell Duxbury that what follows is a print page number.
13. You're ready to emboss!

Note: When working in Scientific Notebook, go to View > Toolbars and turn on the Standard, Math Templates, Symbol Panels, and Tag toolbars.

Hint: Scientific Notebook does not normally allow you to use the space bar in equations.

You can use keyboard shortcuts to enter spaces:

CTRL + spacebar = required space

SHIFT + spacebar = nonbreaking space

CTRL + SHIFT + spacebar = thick space

# Duxbury Shortcut Keys

The following is a list of available keyboard shortcuts. In addition to these shortcuts, you may always access menu options by using the ALT key plus the underlined letter(s). For example, to access the File menu, type ALT-F. To select File: New, type ALT-F-N.

## File Menu

New: CTRL-N  
Open: CTRL-O  
Close: CTRL-F4  
Save: CTRL-S  
Save As: F3  
Translate: CTRL-T  
Print: CTRL-P  
Emboss: CTRL-E  
Exit DBT: ALT-F4

## Edit Menu

Cut: CTRL-X  
Copy: CTRL-C  
Paste: CTRL-V  
Clear: Delete Key  
Select All: CTRL-A  
Highlight: CTRL-H  
Goto: CTRL-G  
Find: CTRL-F  
Find Again: CTRL-I  
Replace: F6  
Spell Check: Shift-F11  
Find Misspelling: F11

## View Menu

Print Font: CTRL-F5  
Braille Font: CTRL-F6  
SimBraille Font: CTRL-F7  
Six Key Entry: F2  
Codes: ALT-F3  
Translated Line: CTRL-F8

## Layout Menu

Apply Style: F8  
Style Level +: ALT-Right Arrow  
Style Level -: ALT-Left Arrow  
Code List: F5

## Global Menu

Embosser Setup: CTRL-F11  
Printer Setup: CTRL-F12

A Duxbury tutorial is available on the Duxbury Web site:  
<http://www.duxburysystems.com/tutorial/intro.asp>

# ASCII Braille Table

|   |   |   |   |   |    |   |   |   |   |
|---|---|---|---|---|----|---|---|---|---|
| a | b | c | d | e | f  | g | h | i | j |
| a | b | c | d | e | f  | g | h | i | j |
| k | l | m | n | o | p  | q | r | s | t |
| k | l | m | n | o | p  | q | r | s | t |
| u | v | x | y | z | &  | = | ( | ! | ) |
| u | v | x | y | z | &  | = | ( | ! | ) |
| * | < | % | ? | : | \$ | ] | \ | { | w |
| * | < | % | ? | : | \$ | ] | \ | [ | w |
| 1 | 2 | 3 | 4 | 5 | 6  | 7 | 8 | 9 | 0 |
| 1 | 2 | 3 | 4 | 5 | 6  | 7 | 8 | 9 | 0 |
| / | + | # | > | ' | -  |   |   |   |   |
| / | + | # | > | ' | -  |   |   |   |   |
| @ | ^ | _ | " | . | ;  | , |   |   |   |
| @ | ^ | _ | " | . | ;  | , |   |   |   |